

MONDAY

TUESDAY

WEDNESDAY

THURSDAY

FRIDAY

# Aug

FEED YOUR  
CREATIVITY



Announcements:



Submit Your Artwork!

1% low-fat milk is provided to Pre-K on a daily basis.  
\*\*Indicates items that are not available for Pre-K. \*\*\* Indicates items that are offered to 9-12 grade only.  
\*\*\*Additional fruit and juice is offered to 9-12. This institution

2

3

4

5

6

9

10

11

12

13

Breakfast pizza, fruit, juice and milk variety

2<sup>nd</sup> Choice Muffin and yogurt

French toast and sausage, fruit, juice and milk variety  
2<sup>nd</sup> Choice Breakfast strudel and cheese stick or cubes

**Power Breakfast:**  
Scrambled eggs, biscuit, gravy, bacon, fruit, juice and milk variety  
2<sup>nd</sup> Choice Cereal variety or Toast

Pancake wrap, fruit, juice and milk variety  
2<sup>nd</sup> Choice Breakfast bread and yogurt

Cinnamon roll, sausage, fruit, juice and milk variety  
2<sup>nd</sup> Choice Breakfast round and yogurt

Pancakes, bacon, fruit, juice and milk variety

2<sup>nd</sup> Choice Muffin and yogurt

Breakfast taquito, fruit, juice and milk variety  
2<sup>nd</sup> Choice Breakfast strudel and cheese stick or cubes

Breakfast pizza, fruit, juice and milk variety  
2<sup>nd</sup> Choice Cereal variety or Toast

Breakfast sandwich choice, fruit, juice and milk variety  
2<sup>nd</sup> Choice Breakfast bread and yogurt

Donut or Donut holes, sausage, fruit, juice and milk variety  
2<sup>nd</sup> Choice Breakfast round and yogurt

Sausage kolache, fruit, juice and milk variety

2<sup>nd</sup> Choice Muffin and yogurt

Cheese omelet, toast, fruit, juice and milk variety  
2<sup>nd</sup> Choice Breakfast strudel and cheese stick or cubes



TEXAS DEPARTMENT OF AGRICULTURE  
COMMISSIONER SID MILLER

This product was funded by USDA.  
This institution is an equal opportunity provider.



Food and Nutrition Division  
Nutrition Assistance Programs



Updated 1/1/2021  
www.SquareMeals.org

# FEED YOUR CREATIVITY August

WEEK OF: \_\_\_\_\_

ANNOUNCEMENTS:

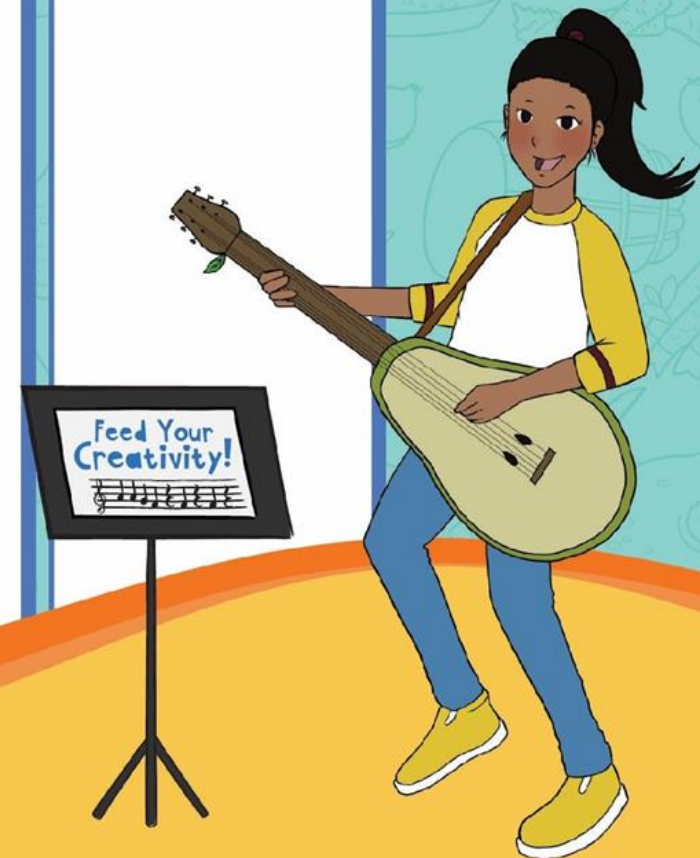
MONDAY

TUESDAY

WEDNESDAY

THURSDAY

FRIDAY



TEXAS DEPARTMENT OF AGRICULTURE  
**COMMISSIONER SID MILLER**

This product was funded by USDA.  
This institution is an equal opportunity provider.



Food and Nutrition Division  
Nutrition Assistance Programs



Updated 1/1/2021  
[www.SquareMeals.org](http://www.SquareMeals.org)

# FEED YOUR CREATIVITY August

**TODAY'S MENU:**

**ANNOUNCEMENTS:**



TEXAS DEPARTMENT OF AGRICULTURE  
**COMMISSIONER SID MILLER**

This product was funded by USDA.  
This institution is an equal opportunity provider.



Food and Nutrition Division  
Nutrition Assistance Programs



Updated 1/1/2021  
[www.SquareMeals.org](http://www.SquareMeals.org)



LUNES

MARTES

MIÉRCOLES

JUEVES

VIERNES

2

3

4

5

6

9

10

11

12

13

16

17

18

19

20

23

24

25

26

27

30

31

# Agosto

ALIMENTA TU  
CREATIVIDAD



## Anuncios:



Entrega Tu Arte!



DEPARTAMENTO DE AGRICULTURA DE TEXAS  
**COMISIONADO SID MILLER**

Este producto fue financiado por USDA.  
Esta institución es un proveedor que ofrece igualdad de oportunidades.



Food and Nutrition Division  
Nutrition Assistance Programs



Actualizado 1/1/2021  
[www.SquareMeals.org](http://www.SquareMeals.org)

ALIMENTA TU  
CREATIVIDAD

# Agosto

SEMANA DE: \_\_\_\_\_

ANUNCIOS:

LUNES

MARTES

MIÉRCOLES

JUEVES

VIERNES



DEPARTAMENTO DE AGRICULTURA DE TEXAS  
**COMISIONADO SID MILLER**

Este producto fue financiado por USDA.  
Esta institución es un proveedor que ofrece igualdad de oportunidades.



Food and Nutrition Division  
Nutrition Assistance Programs



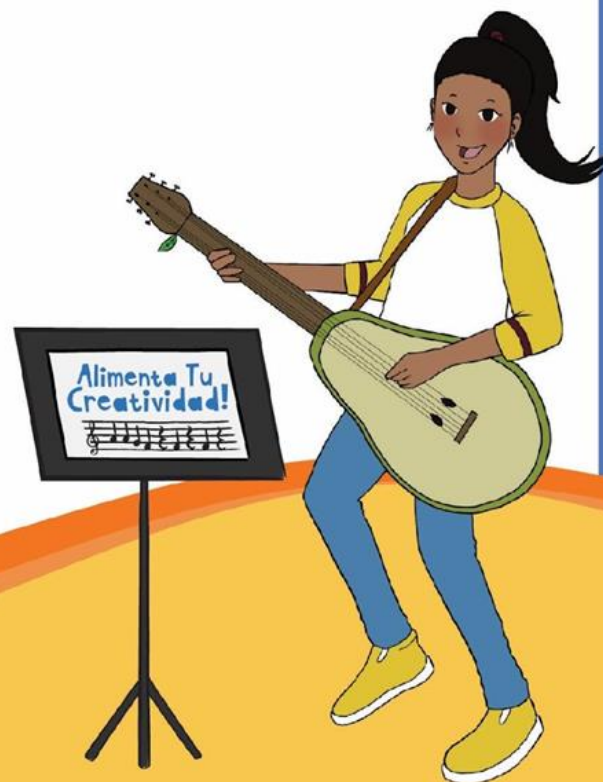
Actualizado 1/1/2021  
[www.SquareMeals.org](http://www.SquareMeals.org)

# ALIMENTA TU CREATIVIDAD

# Agosto

**MENÚ DEL DÍA:**

**ANUNCIOS:**



DEPARTAMENTO DE AGRICULTURA DE TEXAS  
**COMISIONADO SID MILLER**

Este producto fue financiado por USDA.  
Esta institución es un proveedor que ofrece igualdad de oportunidades.



Food and Nutrition Division  
Nutrition Assistance Programs



Actualizado 1/1/2021  
[www.SquareMeals.org](http://www.SquareMeals.org)